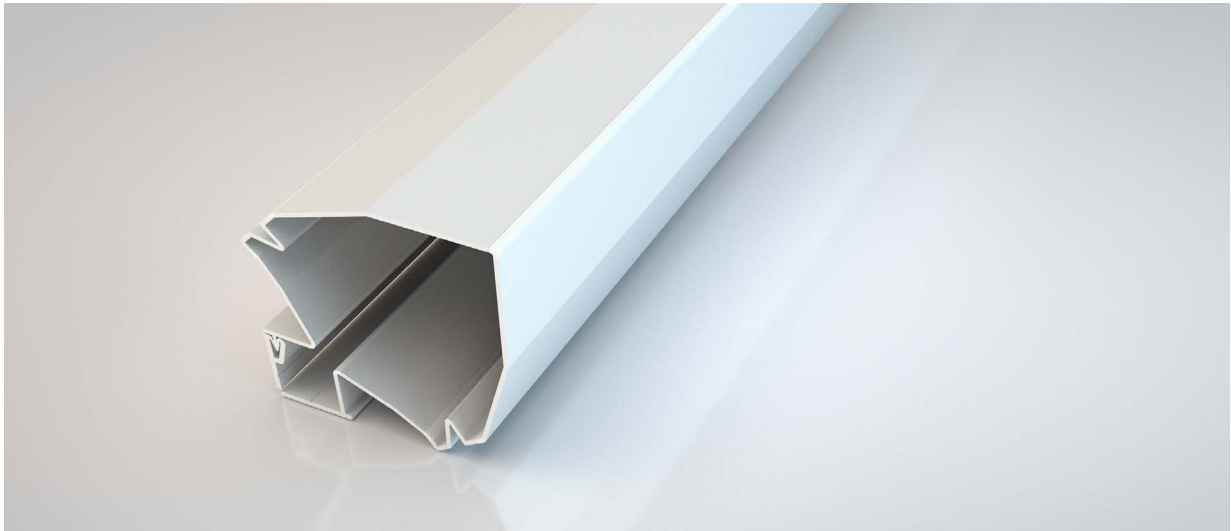


## NOR200

NORSEAL



### Application

Surface mounted to the hinge gap side of timber doorsets. Use one either side of the door for pivoted and double swing applications

### Fixing

Self-adhesive or pinned

### Performance

Door opening up to 180 degrees  
SKG certified to EN 16654 & NEN 8654  
250,000 cycles

### Material

PVC

### Length (mm)

1950

### Colours

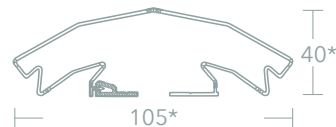
White (**WHT**) / Grey (**GRY**)

### Order codes

**NOR200/SS/ + Colour** eg. **NOR200/SS/GRY** (Grey)

\*Dimensions are approximates due to flexible material.

### Dimensions



5 Regents Drive  
Prudhoe  
Northumberland  
NE42 6PX



[norseal.co.uk](http://norseal.co.uk)



[sales@norseal.co.uk](mailto:sales@norseal.co.uk)



01661 830088

Registered in Companies House Cardiff No. 04317595 VAT Reg. No. 733 9466 08